



Ergonomical control panel



Four driving modes to choose for



Independent steering motors and braking systems for support wheels

Style & Ergonomics

- **spacious, modern and ergonomic operator's compartment** for smooth, comfortable operation
- **electric 360° steering and featherlight hydraulic controls** ensure effortless work shifts
- **the swing-away control console** ensures easy access and optimum driving comfort
- **fully adjustable seat** for weight, backrest and driving position
- **clearview mast** for unobstructed view for the operator

Exceptional Performance

- **smooth and easy handling** of long loads in narrow aisles
- **impressive mast lift and lower speeds** enable high stacking efficiency
- **multi-directional travel:** forwards, backwards, parallel, sideways, and rotational. Travel modes are controlled by a selection switch

High Technology

- **AC technology** for all motors and controllers (drive, pump and steering motors)
- **AC drive motor** provides powerful acceleration, regenerative braking and stepless modulation of travel speed
- **high frequency control unit for the pump** results in smooth, jolt-free performance for each individual hydraulic function
- **each load wheel** has an independent steer motor, controller and brake system for enhanced manoeuvrability
- **all wheels turn 360°** in either direction for infinite steering precision
- **fully programmable functions** like speed, acceleration and braking for job-matched performance
- **broad selection of built-in diagnostic functions** minimise troubleshooting and downtime
- **swing open cab concept** ensures complete, simple and rapid access for service

Options

- **lift height indicator**
- **hinged elbow support**
- **warning light**
- **seat head rest**
- **work lights**
- **rollers for lateral exchanging of battery**
- **special color for chassis**

when **reliability** is **everything**

Like any product bearing the Mitsubishi name, our materials handling equipment benefits from the huge resources and cutting-edge technology of one of the world's largest corporations. So when we promise you **quality, reliability** and **value for money**, you know it's a guarantee we have the power to deliver.

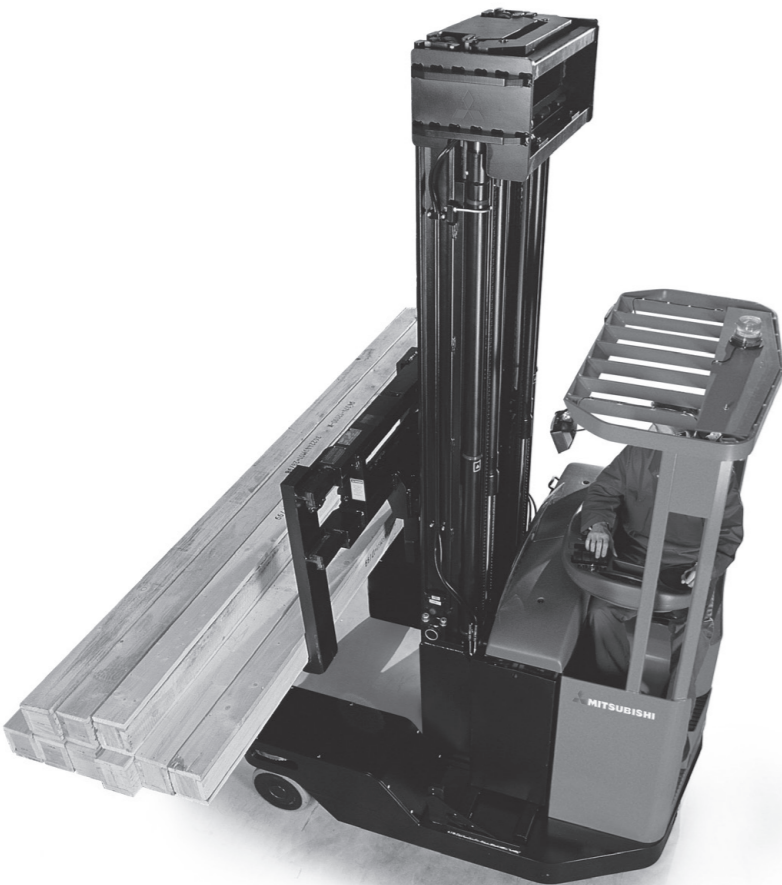
Every model in our comprehensive, award-winning range of forklift trucks and warehouse equipment is built to a high specification and is designed to keep on working for you... day after day... year after year... whatever the job... whatever the conditions.

To ensure your truck stays in constant productive action, we have a network of local dealers – hand-picked for their commitment to customer care... and backed up by the Mitsubishi Forklift Trucks organisation. No matter where you are, we have a dealer close by – ready and willing to meet your needs.

That friendly local service covers everything from identifying the perfect model and configuration for your application to providing competitive, flexible finance and maintenance packages, unbeatable warranties, long and short term hire, and highly responsive field service and repairs... as well as the industry's quickest and most reliable parts supply.

Only Mitsubishi can give you this combination of global engineering excellence and outstanding local support... only Mitsubishi offers you such a quality product at such an affordable price... and only Mitsubishi places reliability as high as you do in its priorities. Contact your local dealer now and see what Mitsubishi can do for you.

You can find your nearest dealer at www.mitforklift.com



RBM Series

Multi-Way Reach Truck • AC Power
2.0 - 2.5 tonnes

RBM20K
RBM25K

Long loads in narrow aisles... No problem!

When you need uncompromised reliability and total directional flexibility, you will find the answer in Mitsubishi's RBM20K and RBM25K Multi-Way Reach Trucks.

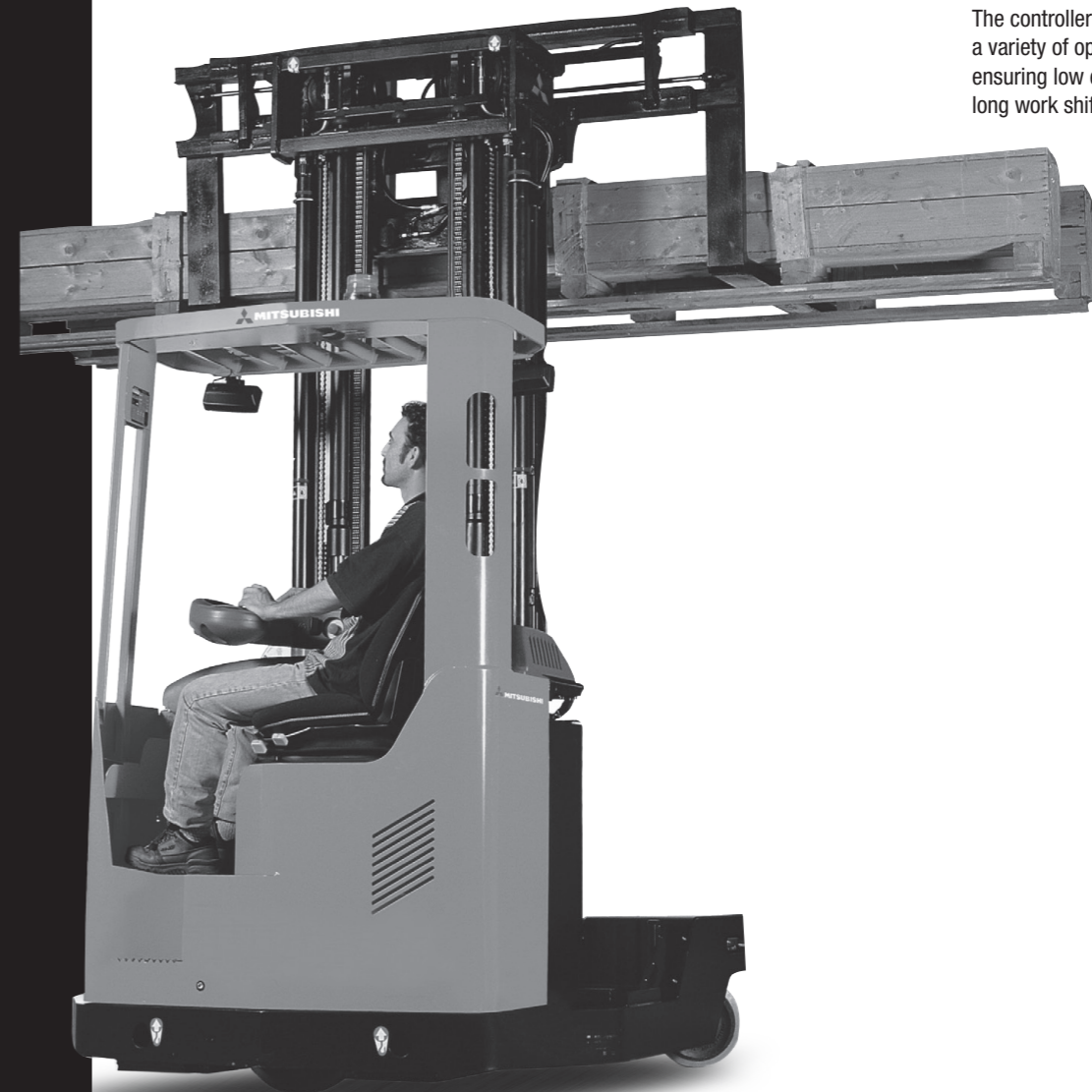
Mitsubishi RBM20K and RBM25K Multi-Way Reach Trucks are ideally suited for intensive industrial applications.

They are particularly productive when required to handle long loads in very narrow aisles or other confined areas.

In addition, they are designed for maximum simplicity of service and routine maintenance. The complete cab swings open allowing unlimited and uncluttered access to all main components and systems.

These models possess a totally programmable controller featuring state-of-the-art electronics.

The controller can be programmed to a variety of operating conditions while ensuring low energy consumption and long work shifts.



W-SM1719 (03/15)
© 2015 MCFE
Printed in The Netherlands

mitforklift@mcf.nl www.mitforklift.com

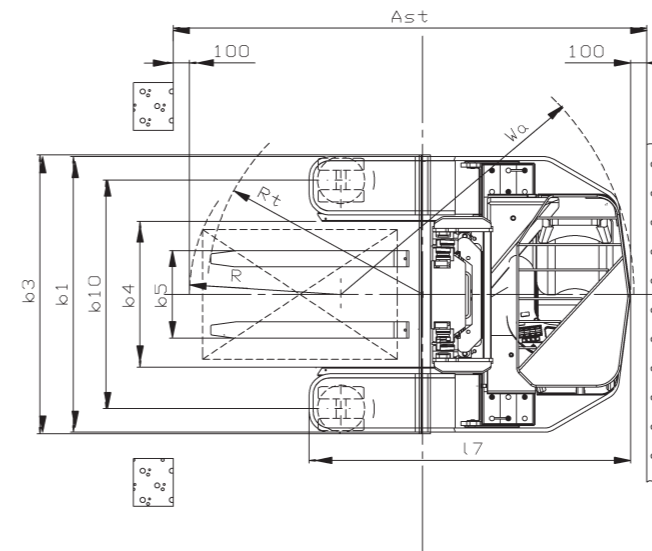
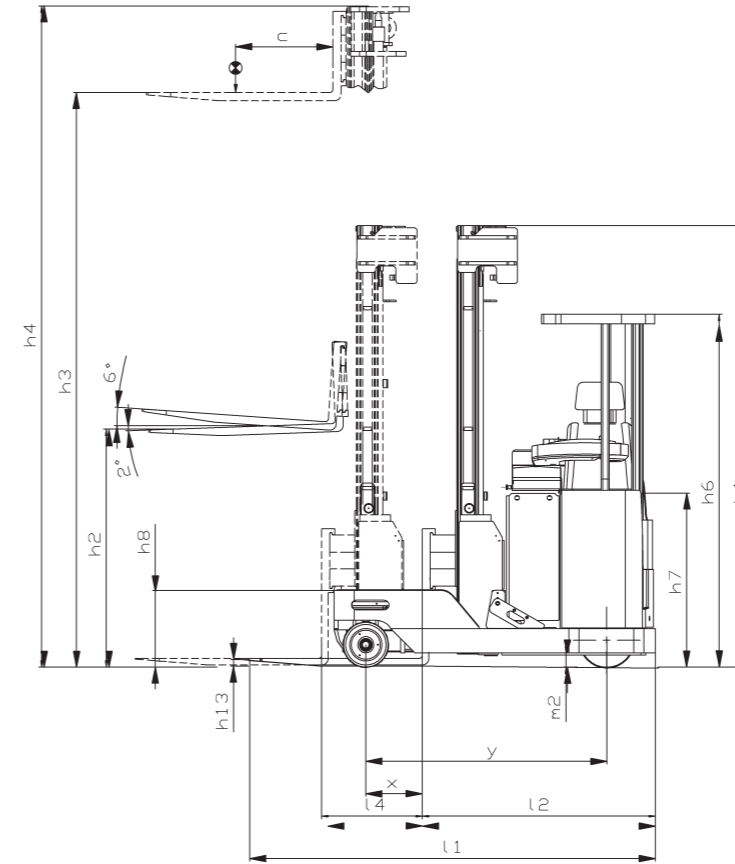
NOTE: Performance specifications may vary depending on standard manufacturing tolerances, vehicle condition, types of tyres, floor or surface conditions, applications or operating environment. Trucks may be shown with non-standard options. Specific performance requirements and locally available configurations should be discussed with your distributor of Mitsubishi forklift trucks. Mitsubishi follows a policy of continual product improvement. For this reason, some materials, options and specifications could change without notice.



RBM20/25K

Multi-Way Reach Truck • AC Power 2.0 - 2.5 tonnes

Characteristics			
1.1	Manufacturer (abbreviation)		Mitsubishi
1.2	Manufacturer's model designation		RBM20K
1.3	Power source: (battery, diesel, LP gas, petrol)		Battery
1.4	Operator type: pedestrian, (operator)-standing, -seated		Sit-on
1.5	Load capacity	Q (kg)	2.000
1.6	Load centre distance	c (mm)	600
1.8	Load wheel axle to fork face (forks lowered)	x (mm)	(see table)
1.9	Wheelbase	y (mm)	1485
Weight			
2.1	Truck weight with nominal load & maximum battery weight	kg	6550
2.3	Axle loadings without load & with maximum battery weight, drive/load side	kg	2700 / 2x 925
2.4	Axle loading, mast forward, with nominal load, front/rear (lowest lift height)		850 / 2x 2850
2.5	Axle loading, mast retracted, with nominal load, front/rear (lowest lift height)		2200 / 2x 2175
Wheels, Drive Train			
3.1	Tyres: PT=Power Thane, Vul=Vulkollan, drive/load side		Vul / Vul
3.2	Tyre dimensions, drive side	(mm)	285 / 75
3.3	Tyre dimensions, load side	(mm)	343 / 140
3.5	Number of wheels, drive/load side (x=driven)		1x / 4
3.6	Track width (centre of tyres), drive side	b10 (mm)	1410
Dimensions			
4.1	Fork tilt, forwards / backwards	α/β °	2 / 6
4.2	Height with mast lowered (see tables)	h1 (mm)	(see table)
4.3	Free lift (see tables)	h2 (mm)	(see table)
4.4	Lift height (see tables)	h3 (mm)	(see table)
4.5	Overall height with mast raised	h4 (mm)	(see table)
4.7	Height to top of overhead guard	h6 (mm)	2185
4.8	Seat height	h7 (mm)	1055
4.10	Height of load legs	h8 (mm)	485
4.15	Fork height, fully lowered	h13 (mm)	50
4.19	Overall length	l1 (mm)	2590
4.20	Length to fork face (includes fork thickness)	l2 (mm)	(see table)
4.21	Overall width	b1/b2 (mm)	1770
4.22	Fork dimensions (thickness, width, length)	s / e / l (mm)	50 / 120 / 1150
4.24	Fork carriage width	b3 (mm)	1740
4.25	Outside width over forks (minimum/maximum)	b5 (mm)	560 - 2030
4.26	Innerwidth of load legs	b4 (mm)	900
4.28	Mast reach	l4 (mm)	(see table)
4.32	Ground clearance at centre of wheelbase, (forks lowered)	m2 (mm)	80
4.33	Working aisle width (Ast) with 1000 x1200 mm pallets, load crosswise	Ast (mm)	(see table)
4.34	Working aisle width (Ast) with 800 x1200 mm pallets, load lengthwise	Ast (mm)	(see table)
4.35	Turning circle radius	Wa (mm)	1800
4.37	Truck length over load legs	l7 (mm)	1980
Performance			
5.1	Travel speed, with/without load	km/h	10.0 / 10.5
5.2	Lifting speed, with/without load	m/s	0.23 / 0.43
5.3	Lowering speed, with/without load	m/s	0.40 / 0.38
5.4	Reach speed, with/without load	m/s	0.10 / 0.10
5.8	Maximum gradeability, with/without load	%	8.0 / 12.5
5.9	Acceleration time (10 metres) with/without load	s	6.0 / 5.6
5.10	Service brakes (mechanical/hydraulic/electric/pneumatic)		electr.-mech.
Electric motors			
6.1	Drive motor capacity (60 min. short duty)	kW	7.5
6.2	Lift motor output at 15% duty factor	kW	14.0
6.4	Battery voltage/capacity at 5-hour discharge	V/Ah	48 / 775, 930
6.5	Battery weight	kg	1100, 1300
Miscellaneous			
8.1	Type of drive control		stepless



$Ast = Wa + R + a$
 $Ast = \text{Working aisle width}$
 $Wa = \text{Turning radius}$
 $a = \text{Safety clearance} = 2 \times 100 \text{ mm}$
 $R = \sqrt{(l6 + x)^2 + (b12 / 2)^2}$

RBM20K / RBM25K • Integrated fork spreader with tilt							
Chassis width (mm)	Battery current (Ah)	Battery weight (kg)	Ast*(Ast3*) 4.33 (mm)	Ast*(Ast3*) 4.34 (mm)	l4 (mm)	l2 (mm)	x (mm)
1700	775	1100	2885 (2650)	2940 (2850)	620	1440	350
1700	930	1300	2925 (2705)	2990 (2906)	565	1495	295

* Ast = Wa + R + 200 (Ast3 = Wa - X + l6 + 200)



Easy handling of long loads in narrow aisles



Spacious and ergonomic operator's compartment



Swing open cab concept

- h1 = Lowered mast height
- h2 + h13 = Free lift
- h3 + h13 = Lifting height
- h4 = Raised mast height
- c = Load centre (distance)

RBM20K, RBM25K					
Mast Type	h3+h13	h1	h4	h2+h13	Carriage tilt F/B (°)
	mm	mm	mm	mm	
Triplex with free lift	4800	2295	5600	1600	2/6
	5400	2495	6200	1800	2/6
	5700	2595	6500	1900	2/6
	5900	2662	6700	1967	2/6
	6300	2795	7100	2100	2/6
	7000	3028	7800	2333	2/6
	7500	3195	8300	2500	2/6
	8000	3362	8800	2667	2/6
8500	3528	9300	2833	2/6	